



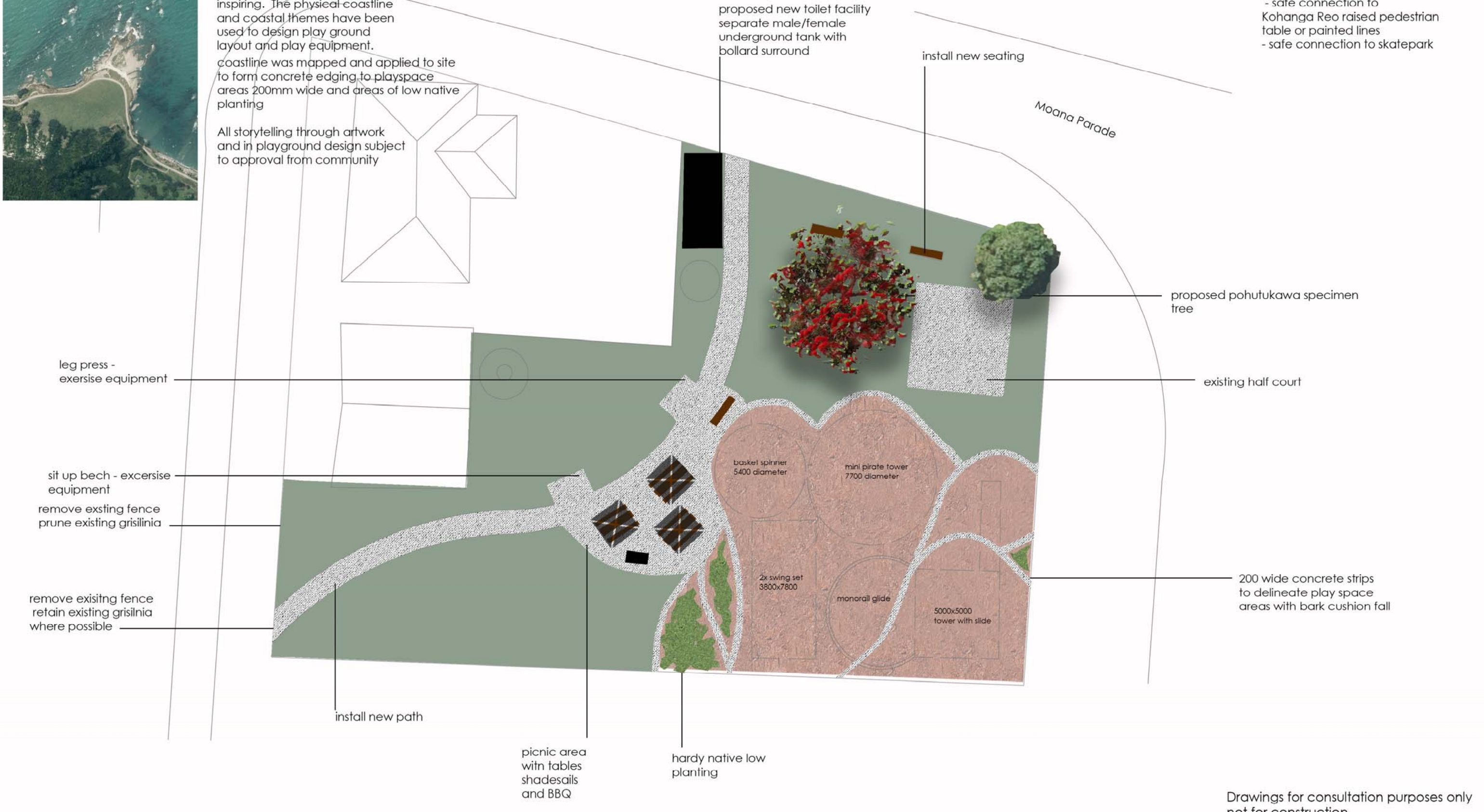
Design statement:

Te Araroa's playground's coastal position is unique and inspiring. The physical coastline and coastal themes have been used to design play ground layout and play equipment.

coastline was mapped and applied to site to form concrete edging to playspace areas 200mm wide and areas of low native planting

All storytelling through artwork and in playground design subject to approval from community

Subject to negotiation with Tairāwhiti Roads:
 - safe connection to Kohanga Reo raised pedestrian table or painted lines
 - safe connection to skatepark



Note : all proposals shown are subject to funding applications and GDC budget allocation

Note : all proposals shown are subject to funding applications and GDC budget allocation

Drawings for consultation purposes only not for construction



Information shown on this plan is indicative only. Gisborne District Council accepts no liability for its accuracy and it is your responsibility to ensure that the data contained herein is appropriate and applicable to the end use intended. Contains Crown Copyright Data - Sourced from Land Information NZ. Orthophotography - NZAM, Terralink and Aerial Surveys

Te Araroa Playground - draft Takutai/Coast Concept plan v2



Map Scale: 1:250
 Date:
 Drawn by: Carol Marter
 note: do not scale of this plan please check all dimensions on site