

Wainui Resource Consent Hearing

Applicant Right of Reply 9th February 2018

NEIL

1. 3 Key Issues:
 - I. Engineering design parameters & geometry of revetment
 - II. End effects and transition of revetment
 - III. Public access
2. Applicants Summary of Submissions, see table below
3. Re-use of material elsewhere on beach – NO
Use of logs could exacerbate failure of rail iron, existing structures are to be viewed as temporary so topping up rocks not appropriate. Could use for WFCS upgrade.
4. Add Penguins to CMP
5. Footprint of Tuahine Cres proposed revetment mostly on private land (see image below).
6. Require 6 day Construction otherwise unnecessarily extends duration and thus construction effects
7. Removal of 21 Wairere Rd rock off beach as and when that occurs – NO
Requires multiple visits to remove – lots of disturbance of beach, beach access points, higher H&S risks & costly. Relies on rapid response otherwise a H&S to beach users (SLSC, horses, dogs, runners, etc)
8. Partial review of WBEMS – take paper to Council in light of new guidelines including desire for emergency response.

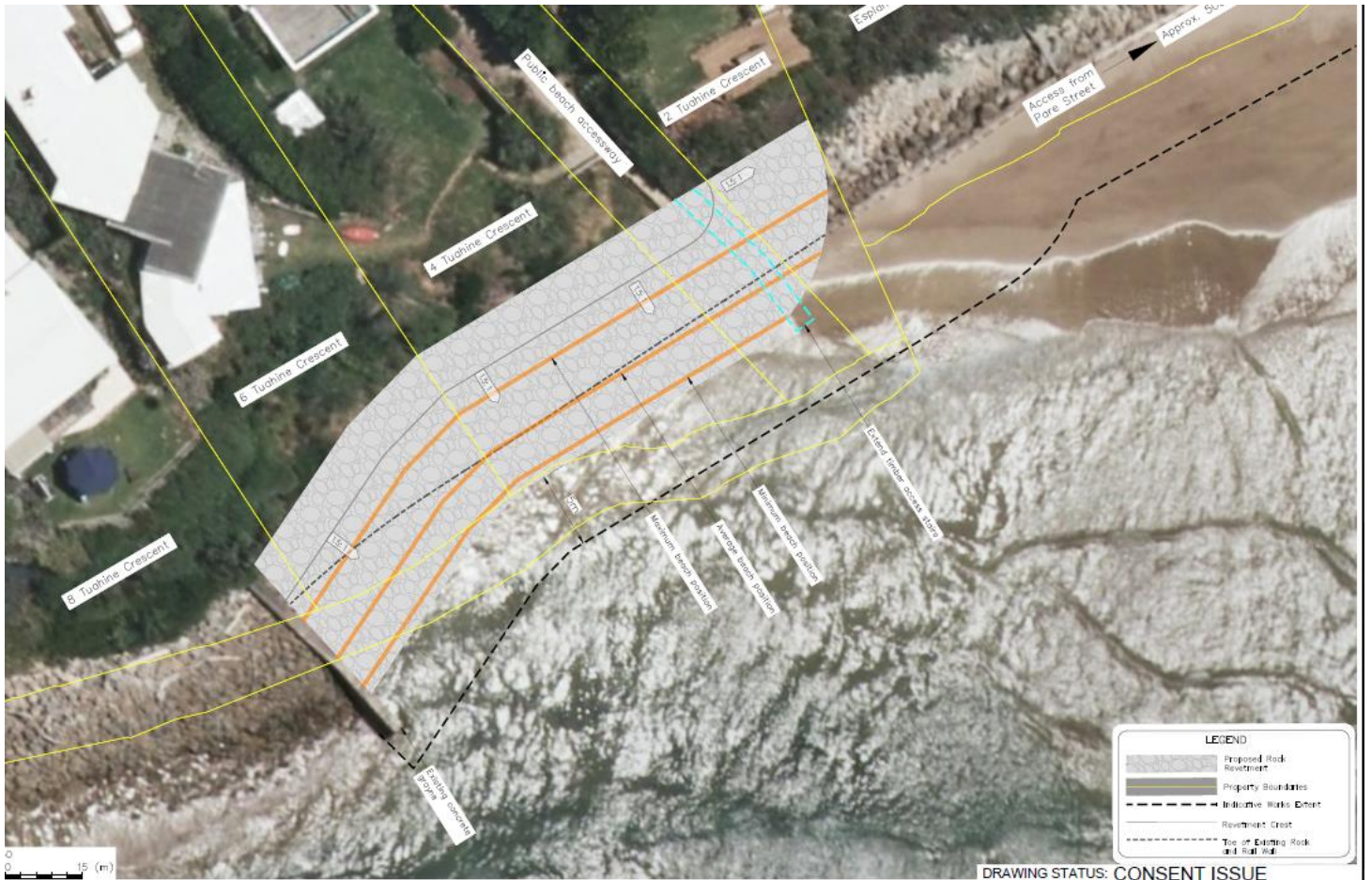
TOM

9. Why revetment only proposed at Tuahine Cres.
10. Tuahine Cres Options: (in order of preference)
 - I. Retain proposed rock size but lower structure height from 5.6m RL to 4.85m RL for current day 100yr Design Event. Can be raised/modified more readily in future as rock adequately sized for future.
 - II. Reduce rock size to 25yr SLR & 50yr design event which lowers structure height from 4.85m RL to 4.75m RL and shortens footprint by 0.4m. However, structure may need to be fully rebuilt to deal with any future SLR/climate change.
 - III. Geo Synthetic Containers (GSC's) with 1:1 slope

Sourcing sand to fill bags could be problematic as we wouldn't use sand from Wainui Beach.
Effects: On balance we believe a neutral effect
 - Improves access
 - Perhaps increased wave reflection and thus increased scour
 - Same end effects as proposed revetment
 - Improved H&S
 - More temporary structure – 25yr design life
 - Footprint same as existing rail and log wall
 - IV. Do Nothing
11. Clarify termination,
12. End effect distance & end effects of Tuahine rock revetment
Note that the full structure terminates at the steps, it's only the transition that continues to the council reserve (see image below).
13. Tuahine rock resilience – stated in specification/application
14. Rocks at 21 Wairere have not caused the "healing" of the dune as stated by some submitters

REUBEN

15. Does Tuahine have RC – Unknown
16. Is removal of rock at 21 Wairere Rd a permitted activity – NO
17. If rock removal at 21 Wairere Rd is refused then it is our expectation that it is being consented to remain in place.
18. Is Access part of our consent – YES



DESIGNED:	LDH	May 17
DRAWN:	CD	May 17
DESIGN CHECKED:	TDS	May 17
DRAWING CHECKED:		
CAD FILE:	1000724-02.dwg	
APPROVED:		
NOT FOR CONSTRUCTION		
This drawing is not to be used for construction purposes unless signed as approved.		
DATE:	20/05/2017	

NOTES:
 1. All dimensions are in millimetres unless noted otherwise.
 2. Aerial photo sourced from Terraviva.

Tonkin+Taylor
 105 Carleton Gore Road, Newmarket, Auckland
 Tel. (09) 355 6000 Fax. (09) 307 0265
 www.tonkintaylor.co.nz

DRAWING STATUS: CONSENT ISSUE	
CLIENT PROJECT:	GISBORNE DISTRICT COUNCIL EROSION PROTECTION WORKS – WAINUI BEACH
TITLE:	ENGINEERING DESIGN FOR RESOURCE CONSENT Rock Revetment Site Plan
SCALE: OF AS SHOWN:	1: 250
FILE NO.:	1000724-02
REV:	A



No.	Name	Support/Oppose	Hearing	Date Received	Sand Push-ups	Tuahine Rock Wall	21 Wairere Gabions	21 Wairere Rock Removal
					Support: 16 Oppose: 20 No Comment: 4	Support: 20 Oppose: 13 No Comment: 7	Support: 29 Oppose: 2 No Comment: 9	Support: 19 Oppose: 14 No Comment: 7
1	Lawrence Schaub	Neutral	Not Specified	28 July 2017	-	-	-	-
2	Paul Dobson	Oppose	Not Specified	28 July 2017	-	-	-	Oppose
3	Richard Cave	Support	Not Specified	31 July 2017	Support	Support	Support	Support
4	Annabel Cave	Support	Not Specified	31 July 2017	Support	Support	Support	Support
5	Daniel Barry	Support	Not Specified	02 August 2017	Support	Support	Support	Support
6	Charles Cave	Support	Not Specified	01 August 2017	Support	Support	Support	Support
7	Adrian Cave	Support	Not Specified	02 August 2017	Support	Support	Support	Support
8	Sharon Kelman	Oppose	Not Specified	09 August 2017	Oppose	Oppose	Oppose	Support
9	Alfred Dreifuss	Oppose	Yes	16 August 2017	Oppose	Support if cost paid by direct beneficiaries	Support	Oppose
10	Laurie Lautmann	Oppose and support	Yes	16 August 2017	Oppose	Oppose	Oppose	Support
11	Phillip & Mary McIldowie	Oppose	Not Specified	17 August 2017	Oppose	Support if cost paid by direct beneficiaries	Support	Oppose
12	Anne Milton	Oppose	Not Specified	18 August 2017	Oppose	Oppose	Support	Oppose
13	Peter Simmonds	Oppose	No	18 August 2017	Oppose	Support	Support	Oppose
14	David Peacock	Support	Not Specified	14 August 2017	Support	Support	Support	Support
15	Richard Calcott	Support	No	21 August 2017	Support	Support	Support	Support
16	Margo Calcott	Support	No	21 August 2017	Support	Support	Support	Support
17	Sara Calcott	Support	No	21 August 2017	Support	Support	Support	Support
18	Petra Calcott	Support	No	21 August 2017	Support	Support	Support	Support
19	Talya Calcott	Support	No	21 August 2017	Support	Support	Support	Support
20	Nicola McCartney	Oppose	Yes	21 August 2017	Oppose	Oppose	Support	Oppose
21	James Millton	Oppose	Not Specified	21 August 2017	Oppose	Support	Support	Oppose
22	Julian Kohn	Oppose	No	21 August 2017	Oppose	Oppose	-	Support
23	Hamish Cave	Support/Oppose	Not Specified	21 August 2017	Support	Support	Support	Oppose
24	Ngati Oneone Hapu(Nikki Searancke)	Support	Not Specified	22 August 2017	Support	Support	Support	Support
25	Fiona Cummings / Michael Holmquist	Oppose	Yes	22 August 2017	Oppose	-	Support	Oppose
26	Kerry Ellis	Oppose	No	22 August 2017	Oppose	-	-	-
27	Amber Dunn	Oppose	Yes	22 August 2017	Oppose but supports a trial	Oppose	-	-
28	Ian & Ellen Howatson	Support/Oppose	Yes	22 August 2017	Oppose	Oppose	Support	-
29	Salvatore & Emma Zame	Oppose	No	22 August 2017	-	-	Support	Oppose
30	Robin Briant	Oppose	Yes	21 August 2017	Oppose	Oppose	Support	Support
31	Julie Hathaway	Oppose	No	21 August 2017	Oppose	Oppose	Support	Oppose
32	Roger Wanklyn	Conditional	Not Specified	23 August 2017	Support	Support	Support	Oppose
33	Noel Craft	Oppose	No	22 August 2017	Oppose	Oppose	-	-
34	Lenka Craft	Support/Oppose	Yes	22 August 2017	Oppose	Oppose	-	Support
35	Wendy Kirkwood	Neutral	Yes	22 August 2017	-	-	-	-
36	Allen Marx	Oppose	Yes	22 August 2017	Oppose	Oppose	Support	Oppose
37	Susan Marx	Oppose	Yes	22 August 2017	Oppose	Oppose	Support	Support
38	Aaron Snodgrass	Oppose	No	22 August 2017	Oppose	-	-	-
39	David McLernon	Support	No	Late	Support	Support	Support	Support
40 & 41	Simon & Caroline Cave	Support/Oppose	Yes	Went missing at GDC	Support	Support	Support	Oppose